

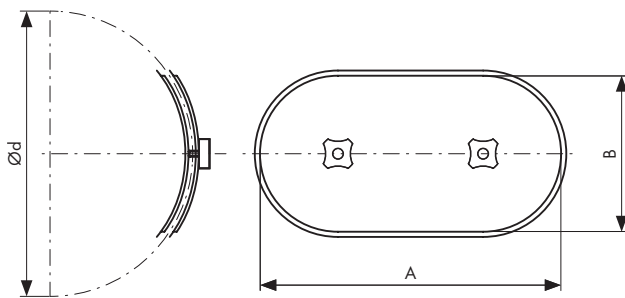


Access door for round ducts VCAD

Description

The "VCAD" access door is designed for assembly in round ducts. The access door is equipped with a gasket which together with special design, ensure a great adhering to a duct surface. As a result, the access door guarantees high airtightness. The set includes a template facilitating hole cutting. Temperature range: -30 °C to +120 °C.

Technical drawing



Dimensions [mm]

Model	Ød	A	B	Weight [kg]
VCAD 125	125	180	80	0,3
VCAD 150-160	150/160	250	150	0,4
VCAD 160	160/180	180	80	0,4
VCAD 180-200	180/200	250	150	0,4
VCAD 200	200	180	80	0,4
VCAD 250	250	250	150	0,4
VCAD 250-280	250/280	200	100	0,4
VCAD 315	315	250	150	0,4
VCAD 400	400	300	200	1,0
VCAD 500	500	300	200	1,0

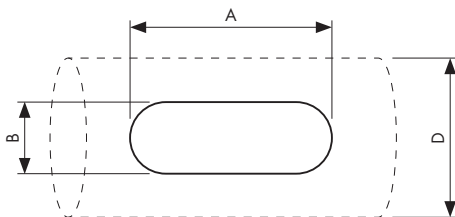
A and B are the dimensions of the hole that should be cut in the duct.

Technical specifications

Minimum dimensions of openings in round ventilation ducts, in accordance with PN-EN 12097 standard.

Rectangular or oval hole

Minimum duct diameter (mm) D	Minimum dimensions of openings in duct walls (mm) AxB
100 ≤ D < 200	180x80
200 ≤ D < 315	200x100
315 ≤ D < 500	300x200
500 < D	500x300



Test of the tightness of round ducts with diameters ranging from 80 mm to 1600 mm

