



Damper with flow meter IRIS



Precise regulation

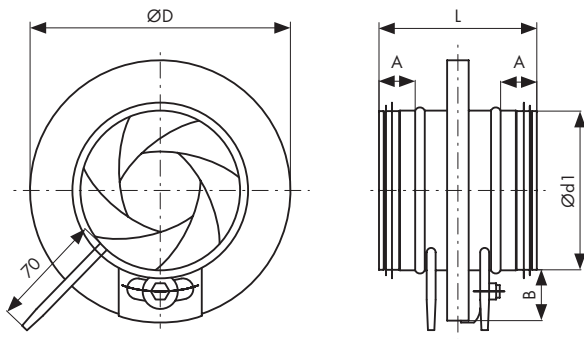


Air measurement capability

Description

Damper "IRIS" is applied, when infinitely regulating air pressure in air ducts. Special leverage design enables smooth change of the hole diameter. Due to lenticular closure, throttling does not affect turbulence and noise inside the duct. IRIS dampers can be applied in air supply or exhaust ducts. It is equipped with two endings, which enable connection with a measuring airflow rate device. IRIS lenticular damper has the ability to fully open, facilitating air duct cleaning. There is no possibility for the damper to be fully closed (remaining hole diameter constitutes 25% of the nominal diameter).

Technical drawing

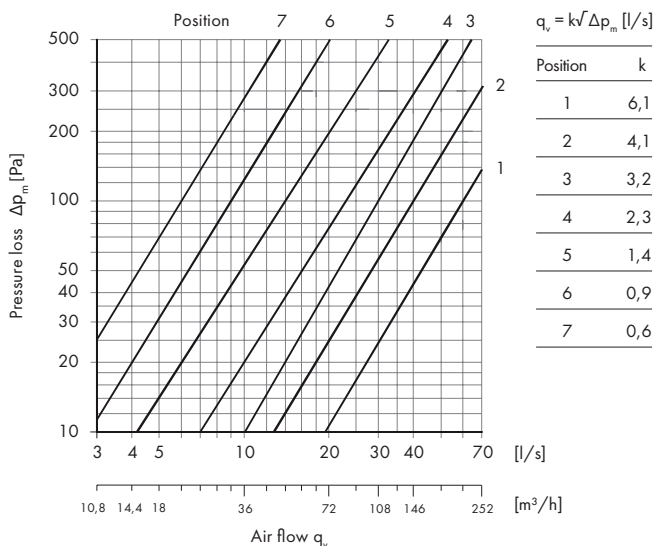


Dimensions [mm]

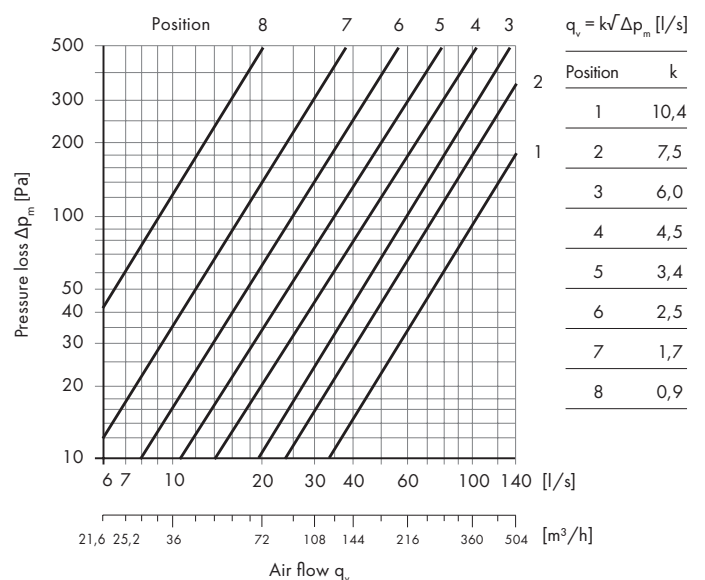
| Model | Ød1 | ØD | L | A | B | Weight [kg] |
|-------|-----|-----|-----|----|----|-------------|
| 80 | 80 | 125 | 110 | 30 | 22 | 0,5 |
| 100 | 100 | 165 | 110 | 30 | 32 | 0,5 |
| 125 | 125 | 188 | 110 | 30 | 32 | 0,7 |
| 150 | 150 | 230 | 110 | 30 | 40 | 1,3 |
| 160 | 160 | 230 | 110 | 30 | 35 | 0,9 |
| 200 | 200 | 285 | 110 | 30 | 42 | 1,4 |
| 250 | 250 | 335 | 135 | 40 | 42 | 2,1 |
| 315 | 315 | 410 | 135 | 40 | 47 | 3,5 |

Characteristics

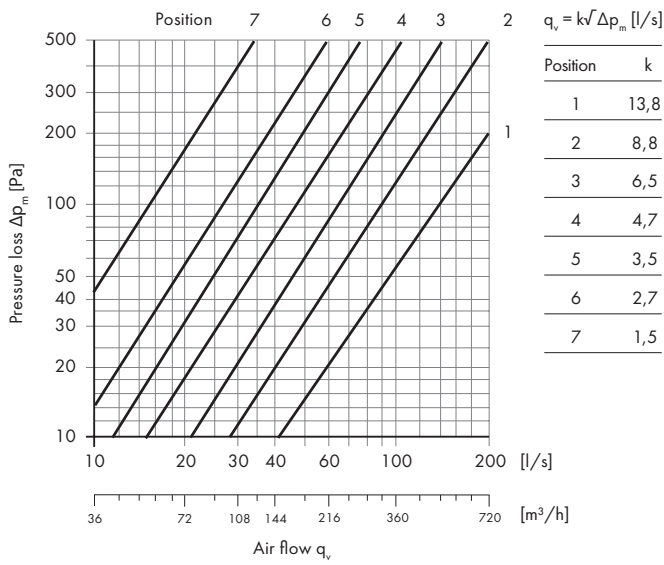
IRIS 80



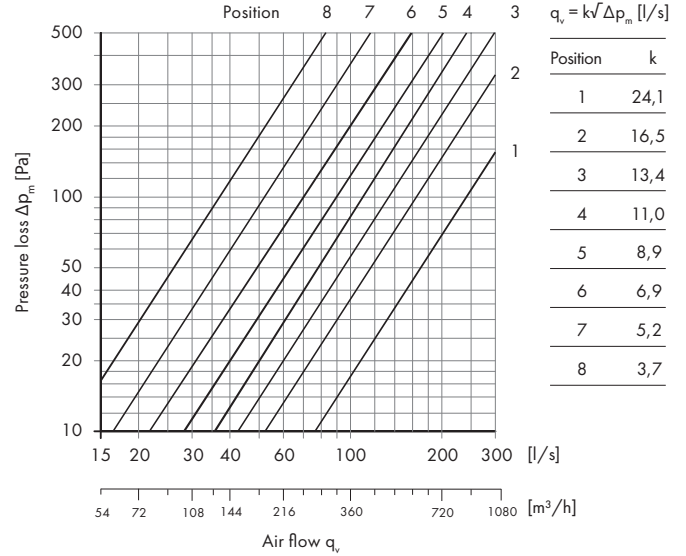
IRIS 100



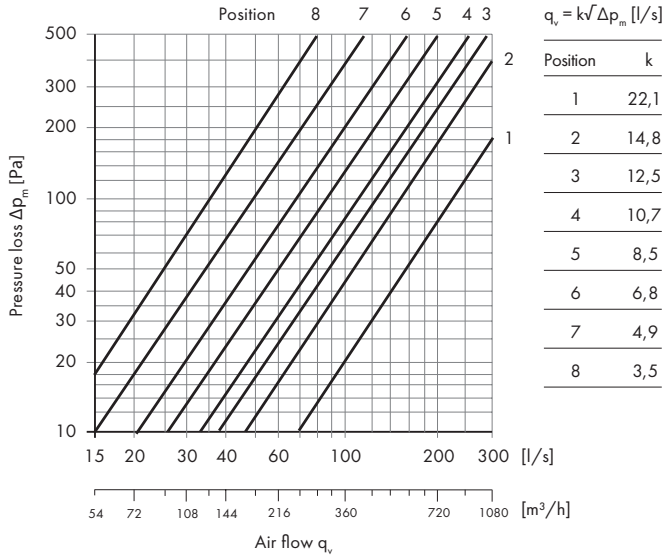
IRIS 125



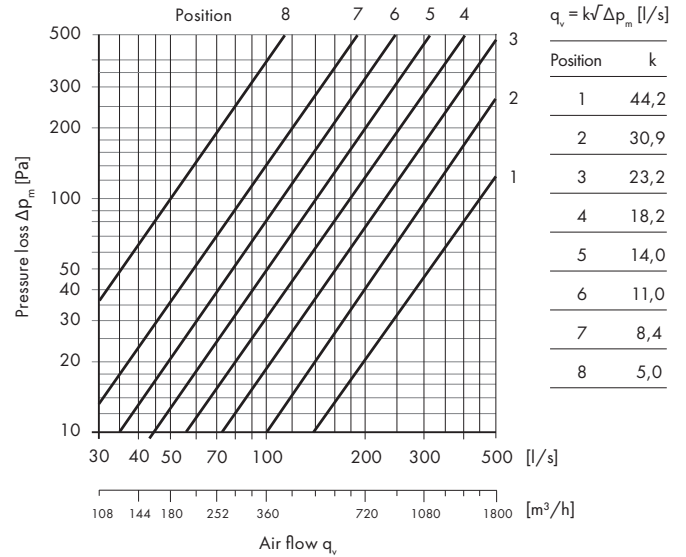
IRIS 150



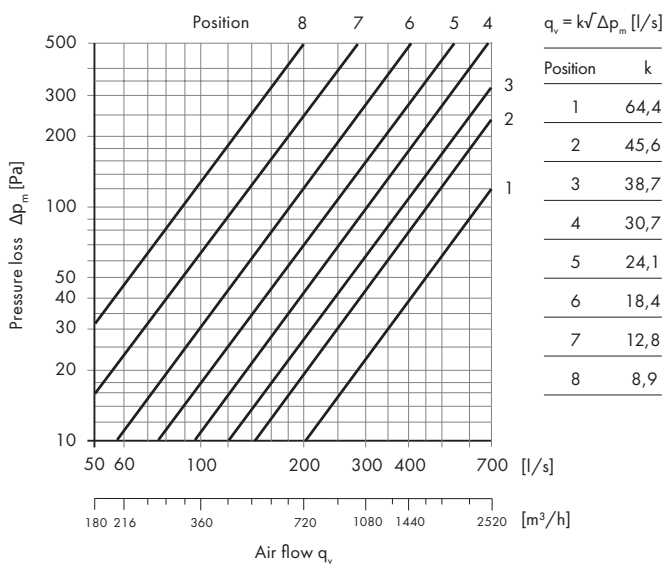
IRIS 160



IRIS 200



IRIS 250



IRIS 315

