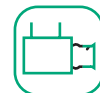


# Linear insulated manifolds FLEXP BOX PRO L



Highest quality galvanised steel  
275 g/m<sup>2</sup>

Self-sealing connectors

Indentations and blockages

Inner insulation: 3 mm

Additional sealing

## Description

The **FLEXP BOX PRO L** is the connection element of the **FLEXP DUCT** flexible ducts. Together they create a complete air distribution solution in mechanical ventilation.

## Design

The box is made of galvanised steel, with an internal insulation of 3 mm thick rubber mat. Inside the box is placed a profiled insert to minimise pressure loss. Thanks to the large number of pressed connections, the box is characterised by high tightness. Self-sealing connectors, made of high quality rubber with an additional structural built-in gasket, allow for very fast and tight fitting of **FLEXP DUCT** channels. On individual request, it is possible to make a stainless steel box.

## Usage

The **FLEXP BOX L** junction box allows for a perpendicular separation of the main supply and exhaust sequences into an appropriate number of **FLEXP DUCT** ducts. Using **FLEXP END** plugs, you can easily adjust the number of working connectors to the needs of the installation. Thanks to the versatility of the box, the side of the construction (left or right) can be determined already at the stage of assembly in a very simple and quick way by turning the box connection by 180°.

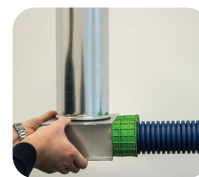
## Exceptionally fast and easy installation without tools!



**1.** Inset the ventilation duct HAVACO Flexo DUCT into a connector.

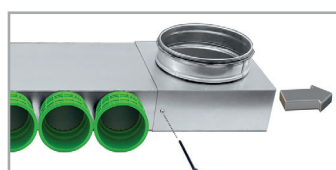
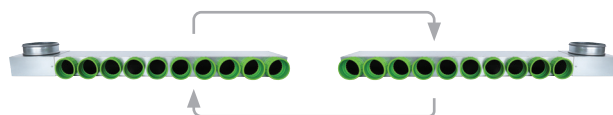


**2.** Press until you hear a click.

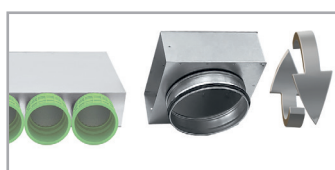


**3.** DONE - you have installed the duct in the box! And the whole thing is in the C tightness class!

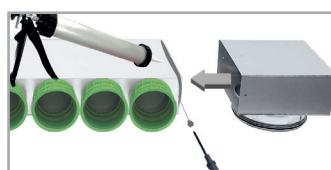
## Change the direction of the manifold in four simple steps



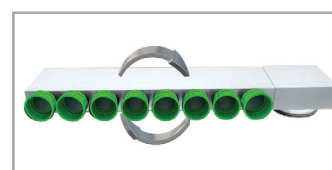
**1**  
Rotate the channel connection fitting.



**2**  
Turn it.



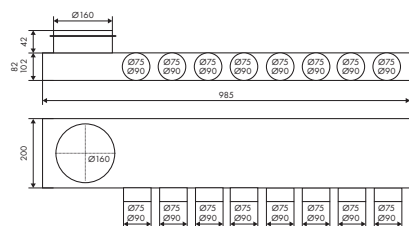
**3**  
Assemble the fitting again, sealing the connection with silicone or tape.



**4**  
Rotate the distribution box by 180°

# Linear insulated manifolds

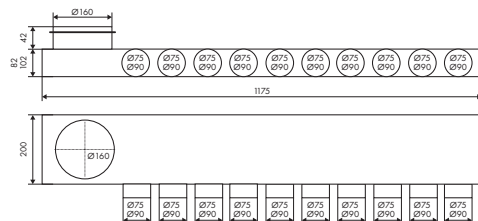
## FLEVO BOX PRO L 8U - technical drawing



## FLEVO BOX PRO L 8U - technical specifications

Model	Connectors [pcs.]	The diameter of connectors [mm]
FLEVO BOX PRO L8Ux75 / 160	8	8x75 / 160
FLEVO BOX PRO L8Ux90 / 160	8	8x90 / 160

## FLEVO BOX PRO L 10U - technical drawing



## FLEVO BOX PRO L 10U - technical specifications

Model	Connectors [pcs.]	The diameter of connectors [mm]
FLEVO BOX PRO L10Ux75 / 160	10	10x75 / 160
FLEVO BOX PRO L10Ux90 / 160	10	10x90 / 160