

## Plenum boxes **PB-SA-B**

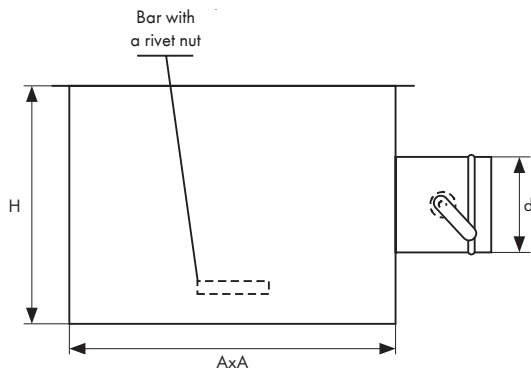
### Description

Plenum box "PB-SA-B" is intended for mounting diffusers "SA-B". Made of galvanised steel. Boxes with individual measurements upon request.

### Types of plenum boxes

- PB-SA-B - Plenum box without additional equipment.
- PB-SA-B-P - Plenum box with manual, single blade damper.
- PB-SA-B-I - Plenum box with soundproof insulation made of rubber foam or mineral wool.
- PB-SA-B-PI - Plenum box with soundproof insulation and damper.

### Technical drawing



### Dimensions [mm]

Diffuser model	Dimension AxA	Height H	Connection D
SA-B 300	265 x 265	250	160
SA-B 400	347 x 347	300	200
SA-B 500	447 x 447	350	250
SA-B 600	540 x 540	400	250