



Pressed collar saddle, without gasket **PSS i PSE**



Rounded, reinforced
"SAFE" edges

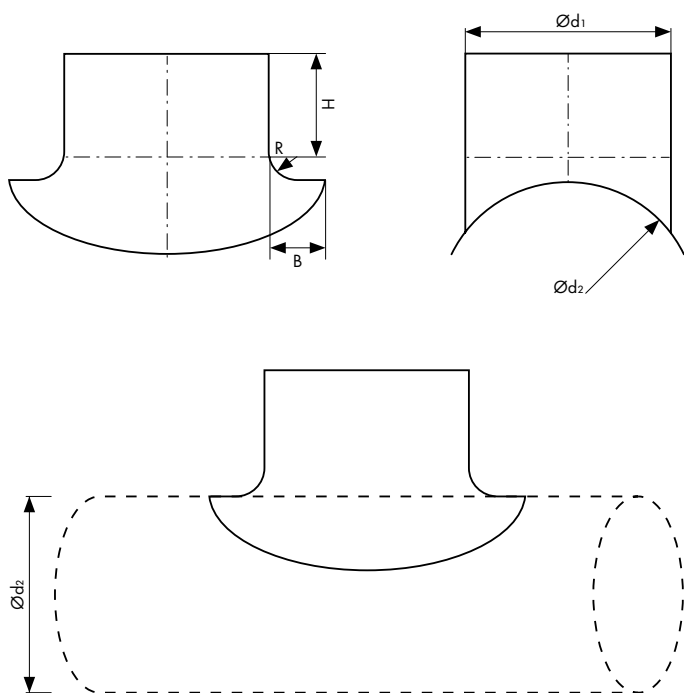


Top quality
galvanised steel
275 g/m²

Description

Collar saddle without gasket "PSS i PSE" **SAFE**, made from top quality galvanised steel (275 g/m²). Fully automated stamping process from one metal sheet. With every edge "SAFE" type - reinforced with curved rims, provide additional fitting rigidity and safe mounting.

Technical drawing



Dimensions [mm]

Ød ₂ nom/ Ød ₁ nom	H	B	R	kg	pcs/box	box type
80 / 80	40	30	10	0,10	70	P12
100 / 80	40	30	10	0,10	60	P12
100 / 100	40	32	12	0,14	85	P6
125 / 80	40	30	10	0,10	60	P12
125 / 100	40	32	12	0,12	90	P6
125 / 125	40	32	12	0,21	70	P4
160 / 80	40	30	10	0,09	75	P12
160 / 100	40	32	12	0,12	105	P6
160 / 125	40	32	12	0,19	85	P4
160 / 160	40	36	16	0,34	70	P2
200 / 80	40	30	10	0,09	70	P12
200 / 100	40	32	12	0,12	100	P6
200 / 125	40	32	12	0,17	80	P4
200 / 160	40	36	16	0,29	54	P4
200 / 200	40	50	20	0,46	63	P2
250 / 100	40	32	12	0,12	100	P6
250 / 125	40	32	12	0,17	105	P4
250 / 160	40	36	16	0,29	68	P4
250 / 200	40	50	20	0,41	32	P4
250 / 250	40	50	20	0,63	38	P2
315 / 100	40	32	12	0,12	115	P6
315 / 125	40	32	12	0,17	100	P4
315 / 160	40	36	16	0,27	66	P4
315 / 200	40	50	20	0,41	32	P4
315 / 250	40	50	20	0,50	44	P2
315 / 315	40	55	25	0,85	60	P1
400 / 100	40	32	12	0,12	100	P6
400 / 160	40	36	16	0,25	76	P4
400 / 200	40	50	20	0,37	38	P4
400 / 250	40	50	20	0,49	44	P2
400 / 315	40	55	25	0,68	66	P1
450 / 200	40	50	20	0,37	38	P4
450 / 250	40	50	20	0,37	22	P4
450 / 315	35	7	-	-	60	P1
500 / 315	35	7	-	-	-	-



Packaging method on page 38