

# Segmented bends with gasket BFL



Rounded, reinforced  
"SAFE" edges



Double gasket,  
tightness class D



Automatic linear  
welding



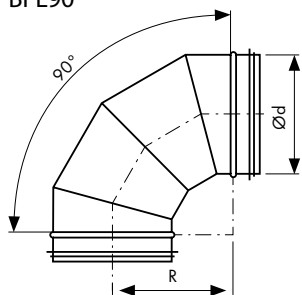
Top quality  
galvanised steel  
275 g/m<sup>2</sup>

## Description

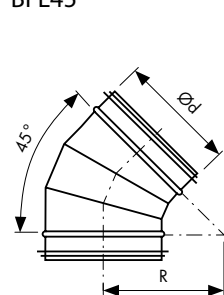
Segmented bends with gasket - "BFL" **SAFE**, are made from top quality galvanised steel (275 g/m<sup>2</sup>). With every edge "SAFE" type - reinforced with curved rims, provide additional bend rigidity and safe mounting. Double gasket EPDM clamped automatically ensure no risk of slipping during mounting. Product with **tightness class D**.

## Technical drawing

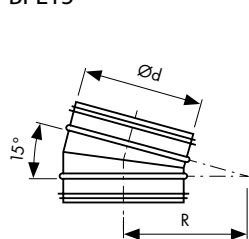
BFL90



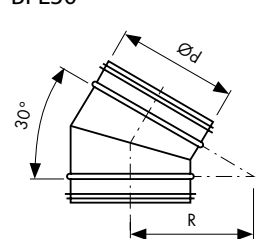
BFL45



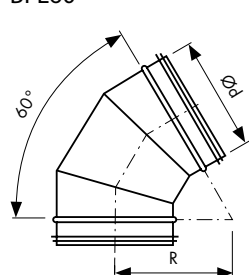
BFL15



BFL30



BFL60



## Dimensions BFL90 [mm], Angle 90°

Ød nom	R	H	kg	pcs/box	box type
250	250	45	0,69	25	
315	315	45	2,56	28	layered packing + stretch film
355	355	45	3,01	21	
400	400	45	3,85	12	
450	450	45	4,61	-	-
500	500	55	7,65	-	-
560	560	55	8,58	-	-
630	630	55	12,74	-	-
710	710	55	14,72	-	-
800	800	100	22,04	-	-
900	900	100	35,10	-	-
1000	1000	100	42,64	-	-

## Dimensions BFL45 [mm], Angle 45°

Ød nom	R	H	kg	pcs/box	box type
250	250	50	1,07	96	
315	315	45	1,45	48	layered packing + stretch film
355	355	45	1,80	42	
400	400	45	2,25	30	
450	450	45	3,24	-	-
500	500	55	4,19	-	-
560	560	55	4,95	-	-
630	630	55	6,64	-	-
710	710	55	7,89	-	-
800	800	100	12,53	-	-
900	900	100	19,75	-	-
1000	1000	100	23,74	-	-

## Dimensions BFL15 [mm], Angle 15°

Ød nom	R	H	kg	pcs/box	box type
250	250	45	0,69	1/25	-/P2
315	315	45	0,90	28	P1
355	355	45	0,90	28	P1
400	400	50	1,33	20	P1
450	450	70	1,7	-	-
500	500	70	2,81	-	-
560	560	70	3,69	-	-
630	630	70	4,32	-	-
710	710	70	5,37	-	-
800	800	100	6,05	-	-
900	900	100	9,69	-	-
1000	1000	100	10,86	-	-



Packaging method on page 38

### Dimensions BFL30 [mm], Angle 30°

Ød nom	R	H	kg	pcs/box	box type
250	250	45	0,8	40	P1
315	315	45	1,06	1/10	-/P2
355	355	45	1,26	12	P1
400	400	45	1,48	10	P1
450	450	70	2,61	-	-
500	500	70	3,65	-	-
560	560	70	4,33	-	-
630	630	70	5,1	-	-
710	710	70	7,62	-	-
800	800	100	9,15	-	-
900	900	100	14,25	-	-
1000	1000	100	17,19	-	-

### Dimensions BFL60 [mm], Angle 60°

Ød nom	R	H	kg	pcs/box	box type
250	250	45	1,17	20	P1
315	315	45	1,7	10	P1
355	355	45	2,07	8	P1
400	400	45	2,57	-	-
450	450	70	4,27	-	-
500	500	70	6,14	-	-
560	560	70	7,88	-	-
630	630	70	9,69	-	-
710	710	70	12,74	-	-
800	800	100	15,76	-	-
900	900	100	24,94	-	-
1000	1000	100	30,08	-	-



Packaging method on page 38