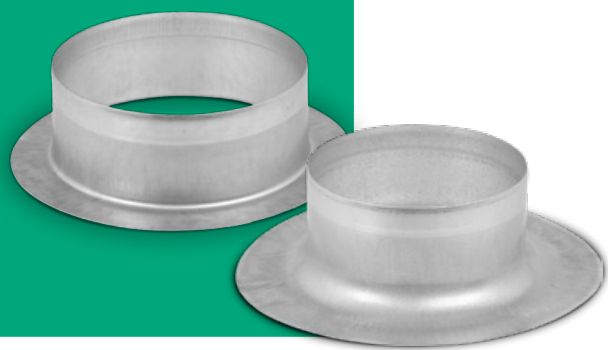


# Take-off IL

# Take-off ILR



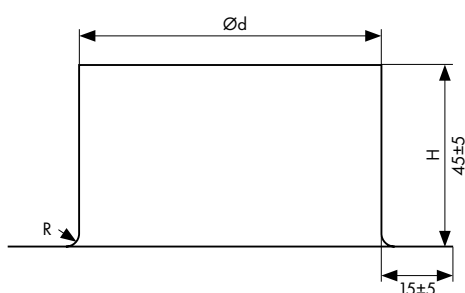
Top quality  
galvanised steel  
275 g/m<sup>2</sup>



## Description

Take-off without gasket - "IL", and pressed take-off "ILR", are made from top quality galvanised steel (275 g/m<sup>2</sup>). Fully automated stamping process from one metal sheet.

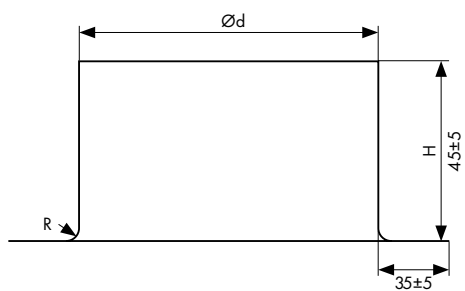
## Technical drawing IL



## Dimensions IL [mm]

Ød nom	H	R	kg	pcs/box	box type
80	45	4	0,05	100	P12
100	45	4	0,08	70	P12
125	45	4	0,09	95	P6
150	45	4	0,14	70	P6
160	45	4	0,14	100	P4
200	45	4	0,18	70	P4
250	45	4	0,23	60	P4
315	45	4	0,24	45	P4
355	45	4	0,36	32	P4
400	45	4	0,4	45	P2
450	50	4	0,54	35	P2
500	65	4	0,6	48	P1

## Technical drawing ILR



## Dimensions ILR [mm]

Ød nom	H	R	kg	pcs/box	box type
80	45	12	0,1	70	P12
100	45	15	0,14	40	P12
125	45	20	0,18	50	P6
150	45	20	0,22	45	P6
160	45	25	0,27	50	P4
200	45	25	0,31	50	P4
250	45	25	0,37	70	P2
315	45	25	0,47	44	P2



Packaging method on page 38